



THE EVOLUTION OF CHARTER SCHOOL QUALITY

Patrick Baude
Marcus Casey
Eric A. Hanushek
Greg Phelan
Steven G. Rivkin

January 2019

Key Questions

1. Are charter schools (in Texas) improving?

YES

2. Do competitive forces appear important?

YES

3. Do bad charters close?

YES

4. Can we identify sources of improvement?

SOMEWHAT

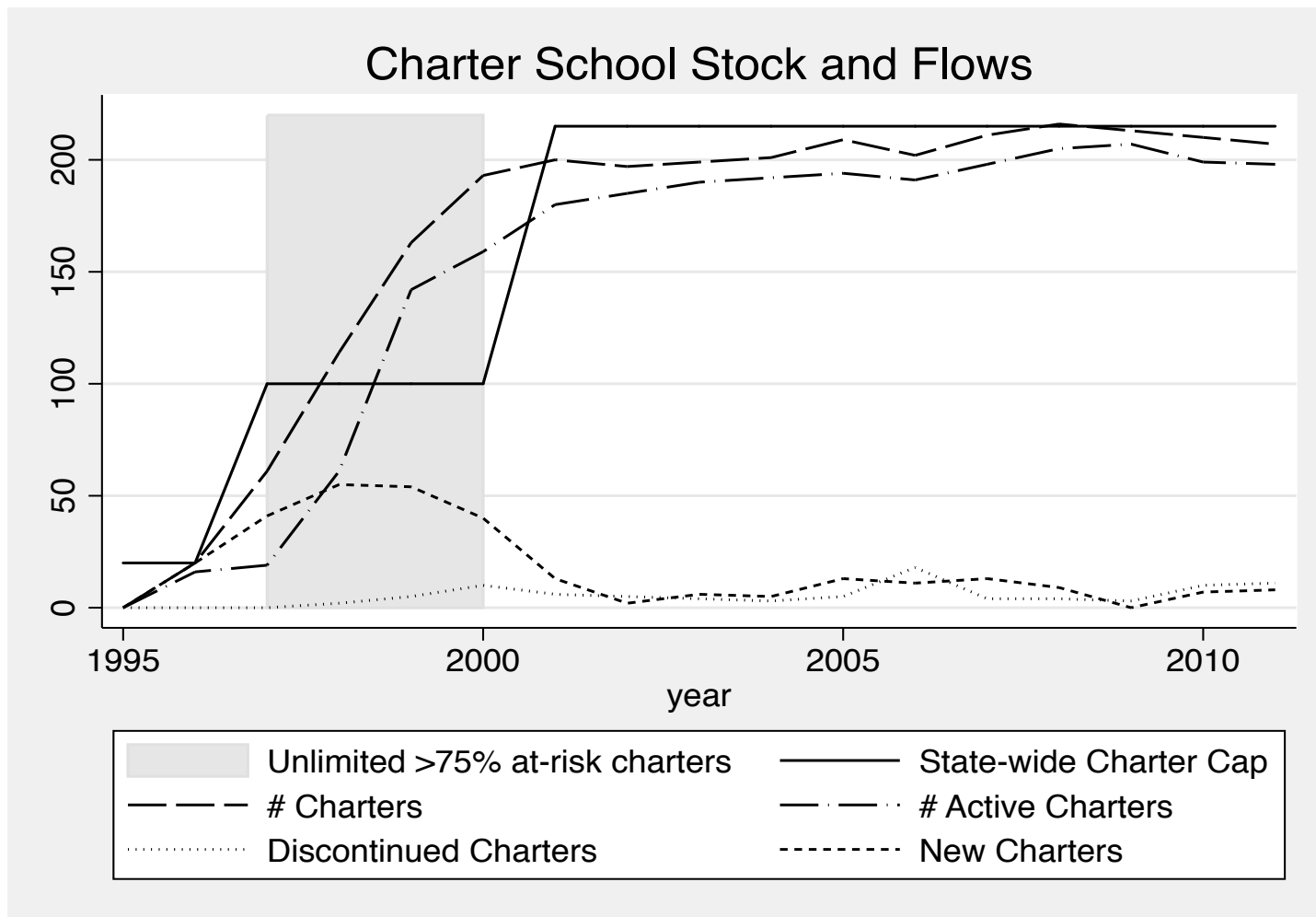
New Markets

- Charters are new institutions
- Learning evolves
 - How to run schools
 - Which schools to attend
- Analyses of charter school outcomes
 - Take slice at specific time
 - Include very different development patterns
- Disagreement about evaluation methods
 - Lotteries
 - Matching
 - Comparison groups

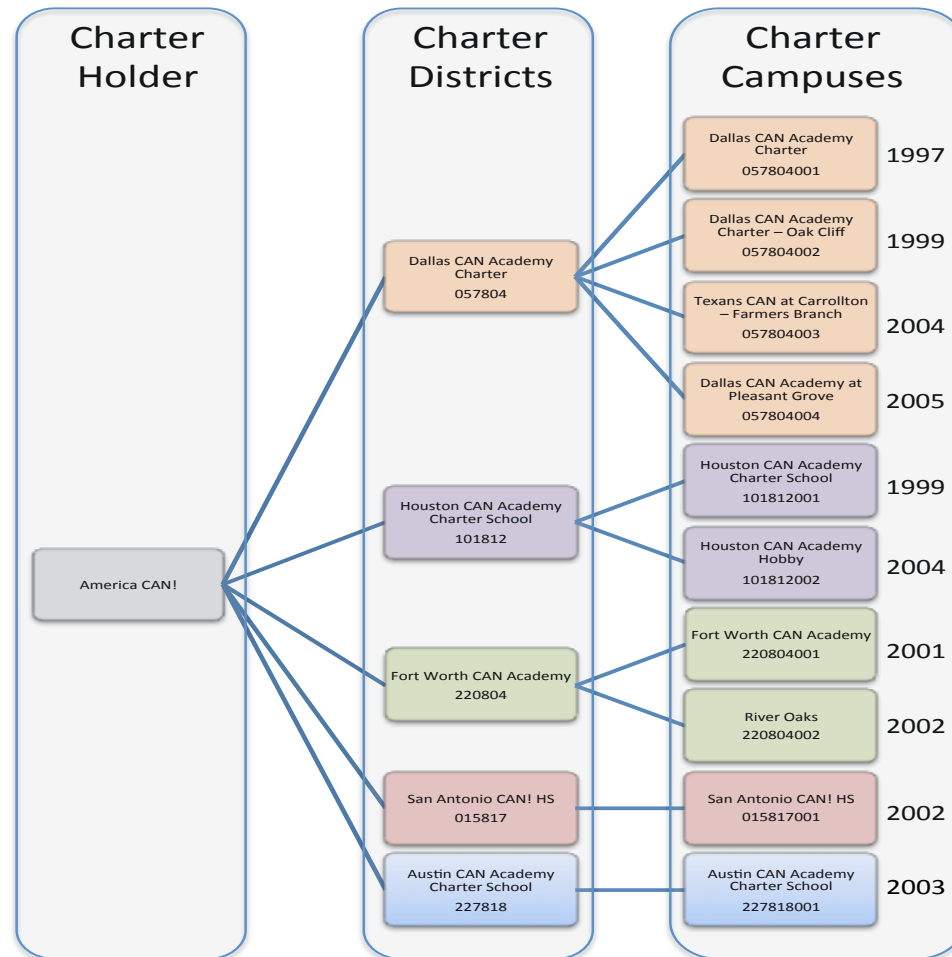
Texas Charter Schools Case Study

- Consider evolution of performance in Texas
 - TX is one of largest charter providers
- Focus on dynamics
- Consider possible structural factors

Charters across Time: 1995-2011

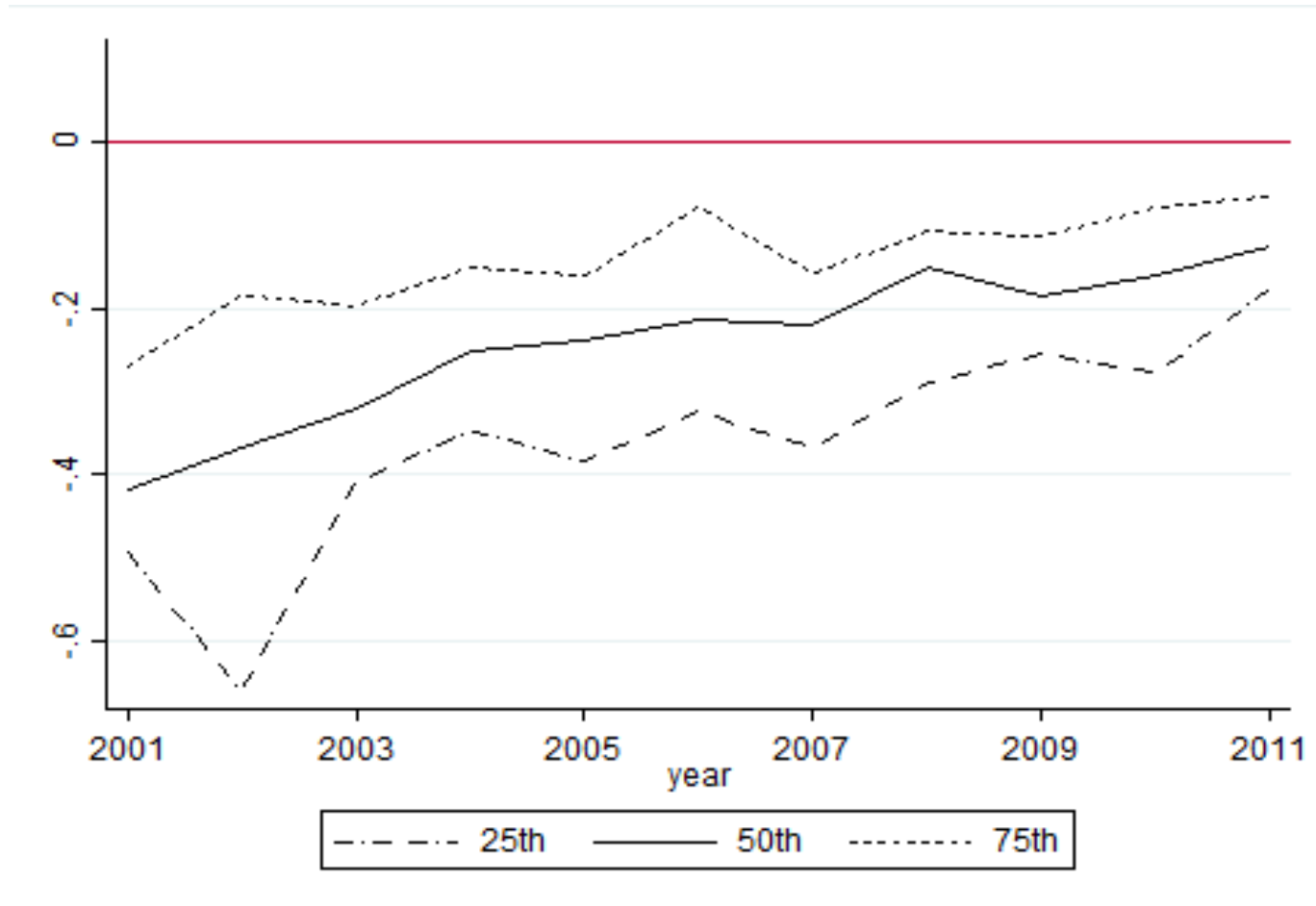


CMO's and Charter/Campus Expansion



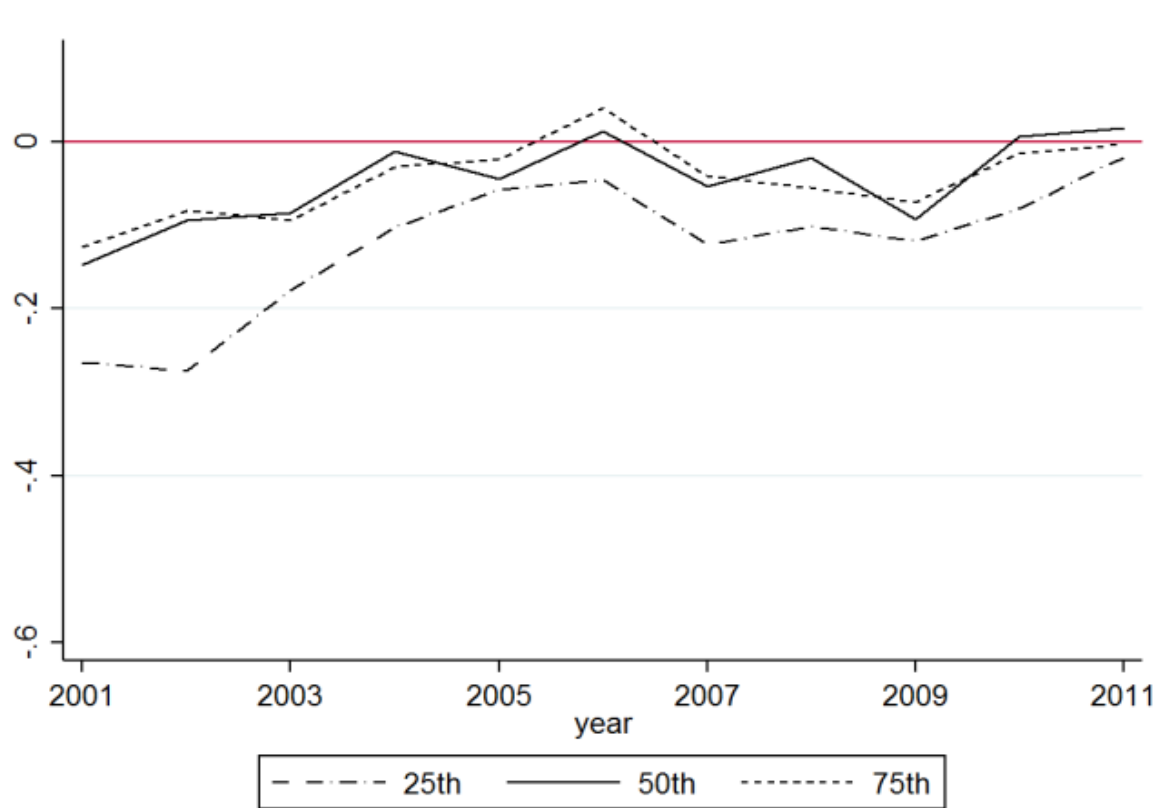
Charter Mathematics Quartiles

(statewide comparisons)




Charter Mathematics Quartiles

(statewide comparisons, enrollment weighted)



Change Dynamics – Math VA

		Value added 2001	Value added 2011
Continuous ops	Average Value-added	-0.26	 -0.12
	Enrollment share	.78	0.19
	# of schools	66	

Change Dynamics – Math VA

		Value added 2001	Value added 2011
Continuous ops	Average Value-added	-0.26	-0.12
	Enrollment share	.78	0.19
	# of schools	66	
Market Closure	Average Value-added	-0.60	..
	Enrollment share	0.17	..
	# of schools	27	

Change Dynamics – Math VA

		Value added 2001	Value added 2011
Continuous ops	Average Value-added	-0.26	-0.12
	Enrollment share	.78	0.19
	# of schools	66	
Market Closure	Average Value-added	-0.60	..
	Enrollment share	0.17	..
	# of schools	27	
Authorizer closure	Average Value-added	-0.52	..
	Enrollment share	0.06	..
	# of schools	12	

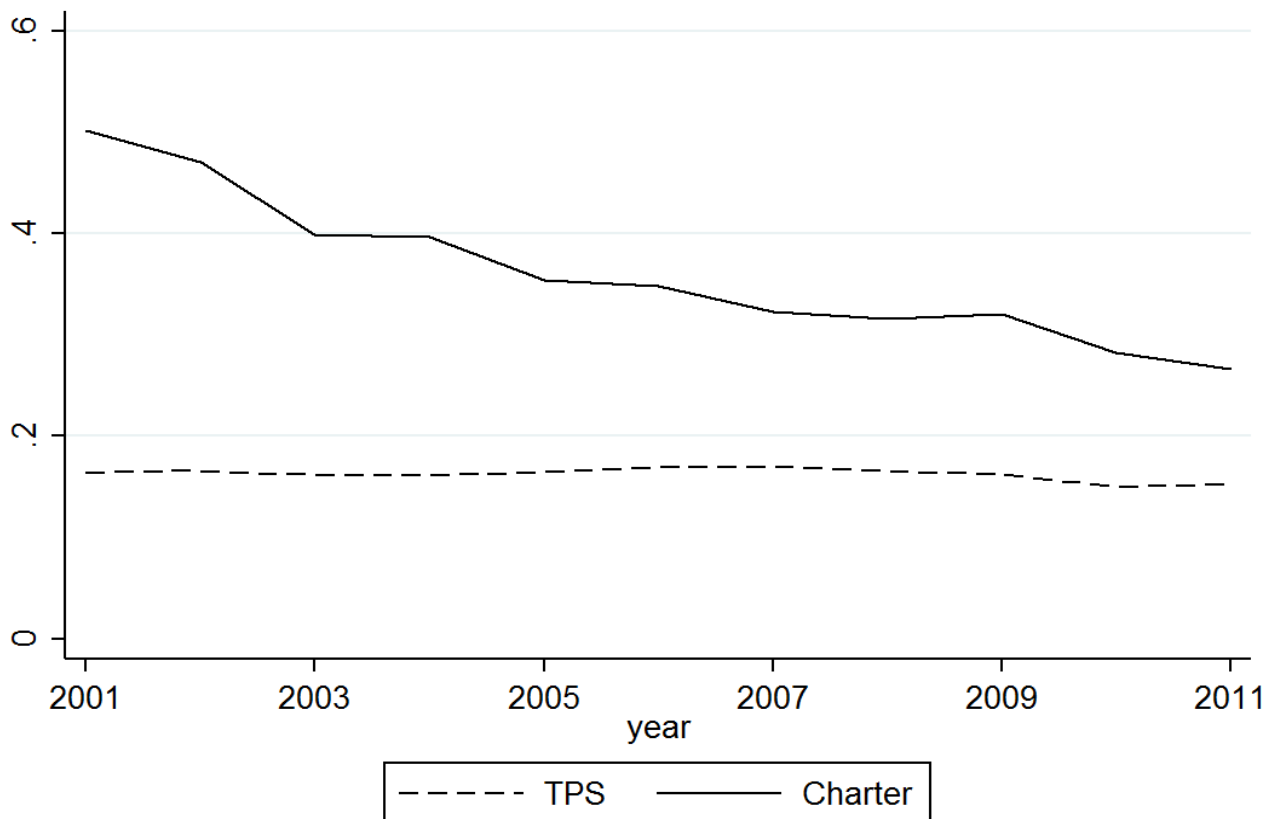
Change Dynamics – Math VA

		Value added 2001	Value added 2011
Continuous ops	Average Value-added	-0.26	-0.12
	Enrollment share	.78	0.19
	# of schools	66	
Market Closure	Average Value-added	-0.60	..
	Enrollment share	0.17	..
	# of schools	27	
Authorizer closure	Average Value-added	-0.52	..
	Enrollment share	0.06	..
	# of schools	12	
New starts	Average Value-added	..	-0.15
	Enrollment share	..	0.80
	# of schools	253	

Some Explanations

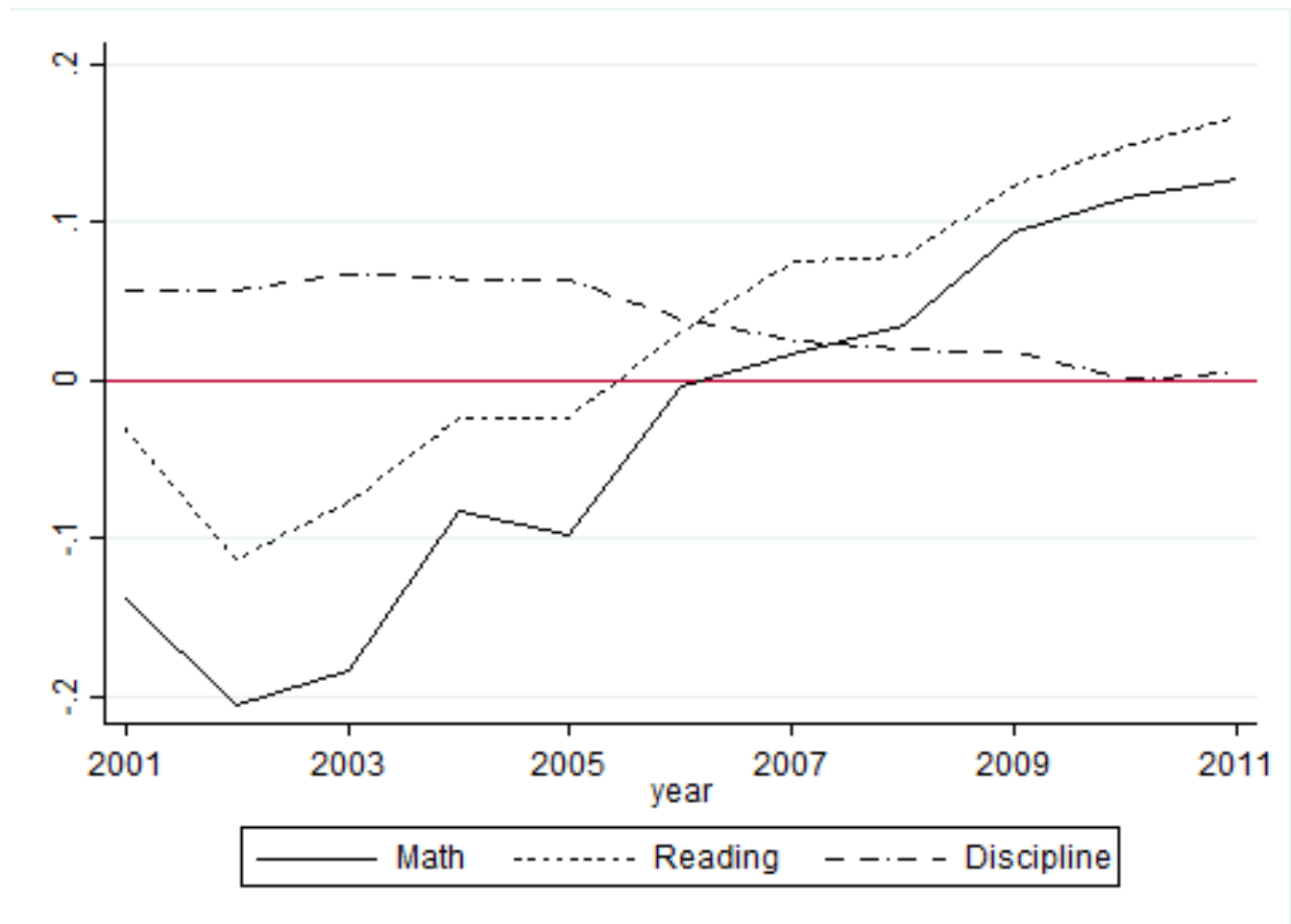
- Dramatic drop in student churn
 - Proportion new falls in half 2001-2011
- Improvements in peers
- Operational choices
 - ‘no excuses’

Proportion New Students, 2001-2011

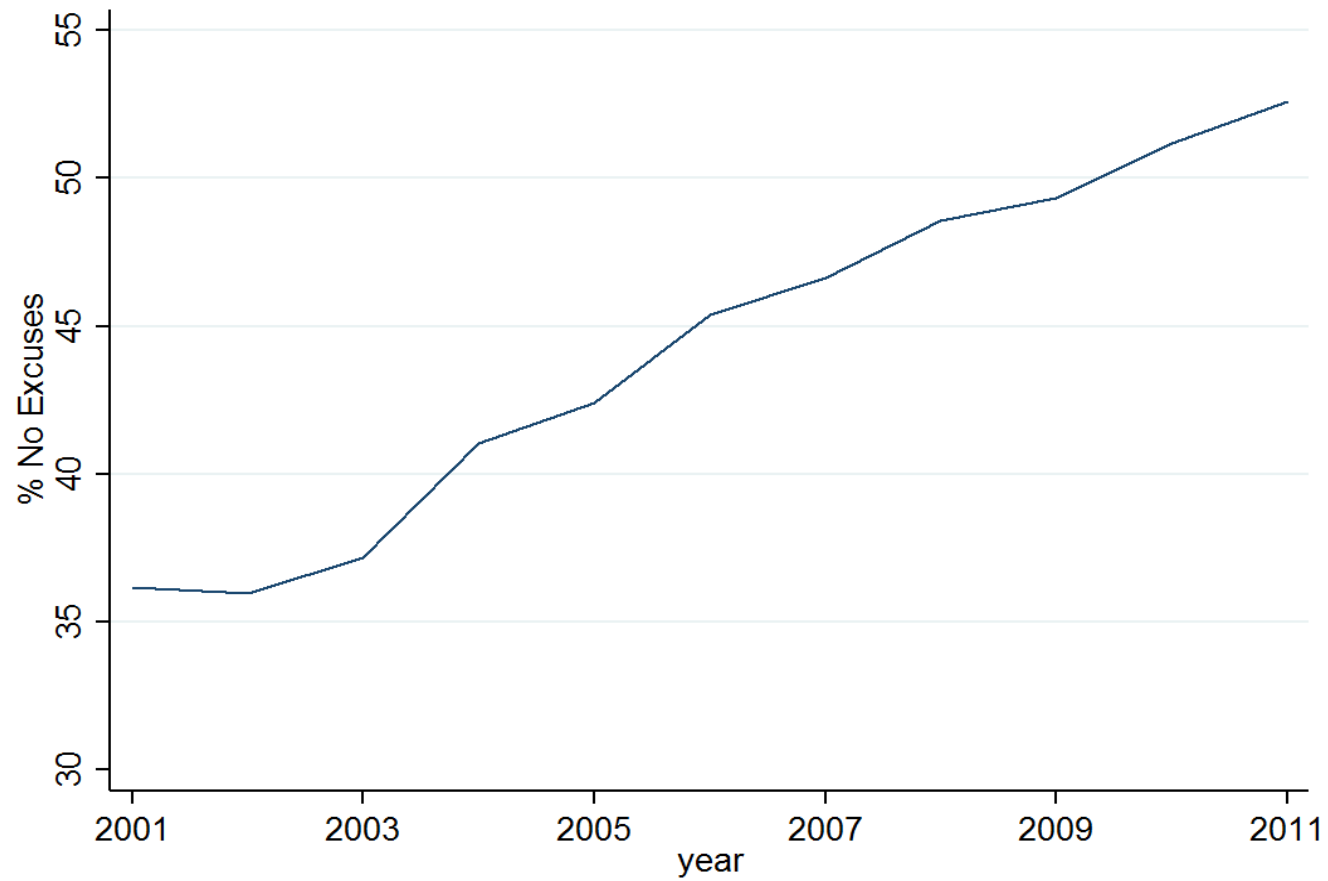


Excludes schools in first year of operation and the lowest grade offered in each school

Selection into Charters



No Excuses



Some Open Questions

- Details of operations
 - No Excuses
 - Uniforms, high expectations
- Quality of leadership
- Student behavioral issues
- Teacher and administrator quality and moves

Key Questions

1. Are charter schools (in Texas) improving?

YES

2. Do competitive forces appear important?

YES

3. Do bad charters close?

YES

4. Can we identify sources of improvement?

SOMEWHAT